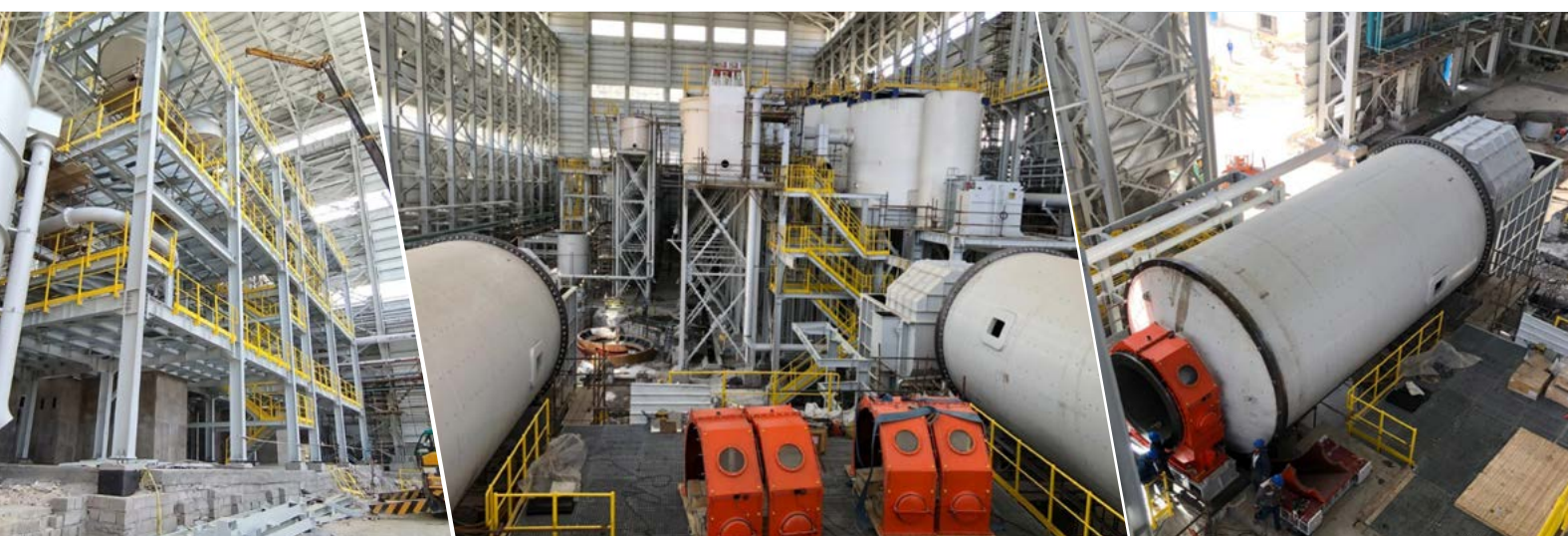




# Capability Statement **LogiProc**



# Introduction



LogiProc is a multi-skilled engineering company, offering complete engineering and project solutions to industry.

We are strongly focussed on the mining, metallurgical and water sectors but also complete projects for industry in general.

## Engineering, Design & Construction Solutions

LogiProc is a South African based, globally active, process driven, multidisciplinary engineering firm, providing high quality engineering solutions to industry. We focus on the design, construction, commissioning and operations of metallurgical and process plants. Our mineral knowledge spans the spectrum with specific competence in Gold, Copper & Cobalt, Diamonds, Base Metals, Rare Earths, Coal, and Lithium.

Established in 1987 and trading in its current form since 1999, the LogiProc group operations are managed from our head office, situated in Lonehill, north of Sandton, Johannesburg, South Africa. We have regional offices in Southern Africa and various others are established globally, as dictated by individual project needs.

Our core staff of qualified engineers includes Chemical, Metallurgical, Mechanical, Electrical, Instrumentation, Civil and Structural engineers, all with a strong project engineering background.

LogiProc's services includes, technical solutions, project management, engineering & design, procurement, construction management, commissioning, and plant operation & maintenance. These services are applied across our four primary industry areas, being minerals processing, water and effluent treatment, operations and maintenance, and infrastructure.

## Capabilities





# Engineering Services



## Project Initiation & Development

We assist our clients with turning their ideas into projects, by partnering with them from conceptual stage through pre-feasibility and bankable feasibility stages, up to implementation. Our flexibility and unconventional thinking enable us to find solutions where others may see a dead end. We are equally comfortable completing the initial studies or providing consulting services and advice.

### Engineering Services Offering

- Conceptual/Scoping Studies
- Pre-feasibility & Bankable Feasibility Studies
- Detail Engineering & Design Packages
- Project & Construction Management
- Plant Operations

### Consulting & Technical Advice

- Testwork Scoping & Management
- Conceptual Flow Sheet, Mass Balance & Plant Layouts
- CapEx & OpEx Estimating
- Due Diligence
- Support for the Financing Process

## Contracting Models

LogiProc execute complete multidisciplinary engineering projects for, or on behalf of, our clients. We work equally well as an independent engineering house or as part of the client's project team, and can execute all or some of the project activities listed above. We are comfortable completing Greenfields or Brownfields projects using any of the standard contracting methodologies including EPC, EPCM, LSTK, BOO, BOOT, or any variations thereof.

## Project Implementation & Execution

Our clients rely on us to provide cost effective and fit for purpose implementation solutions which includes:

### Engineering & Design

Our in-house multi-skilled engineering and design team is the engine that drives it all. This includes:

Our flexibility and unconventional thinking enable us to find solutions where others may see a dead end.

- Process
- Structural, Mechanical, Piping & Platework (SMPP)
- Earthworks
- Infrastructure
- Civil & Rebar Designs,
- Electrical Design
- Control & Instrumentation

All our disciplines are supported by our established drawing office, effectively servicing all fields. The drawing office has several of the latest technology CAD stations equipped with the most up to date drawing software. We utilise the Autodesk suite of CAD software but designs on other packages can also be accommodated.

Our designs are completed in 3D and clash detection software is utilized to minimize site changes. Document control is an integral part of design management. We have our own in-house document control system, but our document controllers are also familiar with using client specified systems and procedures.

### Project Management

The project manager's role is not only to direct the project execution, but also to fulfil the client's needs. Matching personalities and skills to the client's expectations and requirements is key. Our project management systems are based on the principles as embodied in the well-known PMBOK guidelines. Project planning and cost controls are associated project support services, directly controlled by the project manager.

### Procurement

Using our standard procurement systems as a base, a project specific procurement strategy is developed for each individual execution project. Supported by our long-standing relationships with reputable and established suppliers, we can procure the best products and fabrication/construction services from almost anywhere in the world. Procurement activities are supported by appropriate expediting, QA/QC, and logistics support. Efficient planning and management of the total procurement function enable us to deliver high-quality projects, at the best possible cost.

### Construction Management

A competent construction management team is required to turn an engineered solution into reality. We put teams together that excel in controlling the technical integrity, budget, and schedule of the project, while managing the safety, health, environmental and quality (SHEQ) issues.

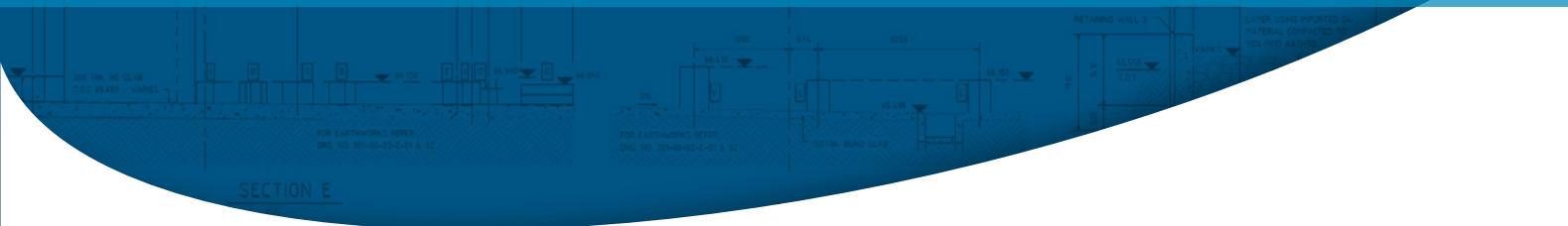
### Commissioning

Project specific process and control knowledge is required for efficient commissioning. That is why our lead project process engineer normally acts as commissioning manager. Utilising our well-developed commissioning systems and with support from the design team, commissioning time is minimised.





“ LogiProc has extensive experience operating through many parts of South Africa, the African continent as well as in countries throughout the rest of the world.”



## Minerals Processing

Minerals processing is [LogiProc's](#) core strength and processing knowledge is our key differentiator. Our process engineering team is well versed in unit operations such as Stockpiling & Reclaiming, ROM Handling, Crushing, Screening, Milling, Gravity Separation, Flotation, Leaching, Adsorption, Elution, Gold Smelting, Dense Media Separation (DMS), Thickening, Filtration and other solids de-watering processes, Magnetic Separation, etc.

This process expertise is supported by competence and experience in related fields such as material handling, pumping and piping, civil, structural, infrastructure, tailings disposal, electrical, instrumentation and control. We excel in integrating these skills in order to deliver world class processing plants.

We jealously guard our reputation and have developed long standing relationships with equipment suppliers and service providers in industry, which enables us to provide our clients with the best possible solution at a competitive cost.

## Countries of Work

While based in Johannesburg, where many of the major equipment vendor's head offices are located, [LogiProc](#) has extensive experience operating through many parts of South Africa, the African continent as well as in countries throughout the rest of the world.

## Project Datasheets

For references or additional project datasheets, please contact the Business Development Department at [LogiProc](#) on +27 (11) 465 2216 or email [nico.brenkman@logiproc.co.za](mailto:nico.brenkman@logiproc.co.za).



# Contact Details

For more information please contact the LogiProc Head Office:

Tel: +27 (0) 11 465 - 2216/7/8

Richard Bewsey: +27 (0) 82 - 926 - 1033 | [richard.bewsey@logiproc.co.za](mailto:richard.bewsey@logiproc.co.za)

Johan Smit: +27 (0) 83 - 309 - 9977 | [johan.smit@logiproc.co.za](mailto:johan.smit@logiproc.co.za)

[www.logiproc.co.za](http://www.logiproc.co.za)

CV's of key personnel are available on request.

