

African Barrick Gold Mine

North Mara – R.O.M & Crushing Plant Upgrade

PROJECT DESCRIPTION

ROM & Crushing Circuit Upgrade. The primary objective was to increase the plant throughput from 575 - 750 tph, and to improve the Run of Mine (ROM) tip operation.

PLANT CAPACITY

750 tph Gold Ore

LOCATION

Mara Region, Tanzania, Africa

CONTRACT TYPE

Detail Design & Engineering

SCOPE

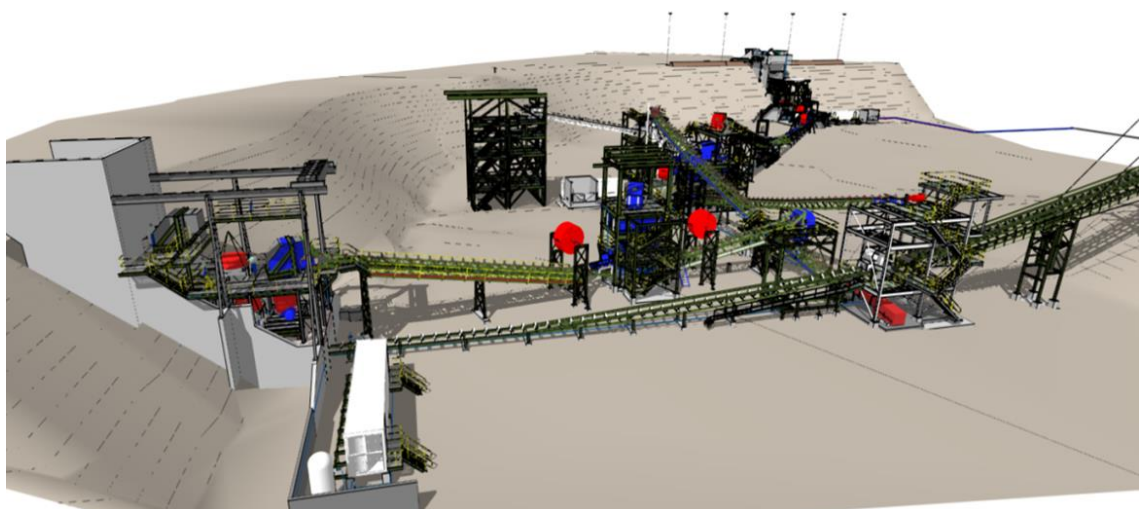
- Completion of a PFS prior to execution of detailed design
- Detailed engineering & design package including:
 - Process
 - Mechanical
 - Civil & Structural
 - Electrical
 - Control & Instrumentation
- Procurement package for equipment.
- Tender packages for construction packages.

PERIOD

April 2012 – October 2012

African Barrick Gold's North Mara Mine is an open pit gold mine located in the Tarime district of the North Mara region of Tanzania.

LogiProc was appointed to complete the detailed engineering and design of a 750 tph comminution plant. The design included a new ROM tipping structure complete with rock breaker & primary crushing; new secondary crushing and screening circuits; new tertiary crushing and scalping screen; and a by-pass hopper complete with feeders. This was done to reduce the particle feed sizes to the main SAG mill to increase the throughput of the plant.



Contact Number

+27 (0)11 465 2216



Web Address

www.logiproc.co.za



LogiProc HQ

Block E, Lonehill Office Park
3 Lone Close, Lonehill, Sandton