

Tendele Coal Mining

Somkhele 2 Coal Processing Plant



LogiProc

PROJECT DESCRIPTION

Design and Construction of a Coal Washing Plant.

Process areas included:

- Crushing
- Dense Medium Separation
- Cyclone & Screening
- Spiral Circuit
- Thickener
- Product Storage & Loading Bin
- Stockpiling

PLANT CAPACITY

330 tph Raw Coal

LOCATION

KwaZulu Natal, South Africa

CONTRACT TYPE

EPCM

SCOPE

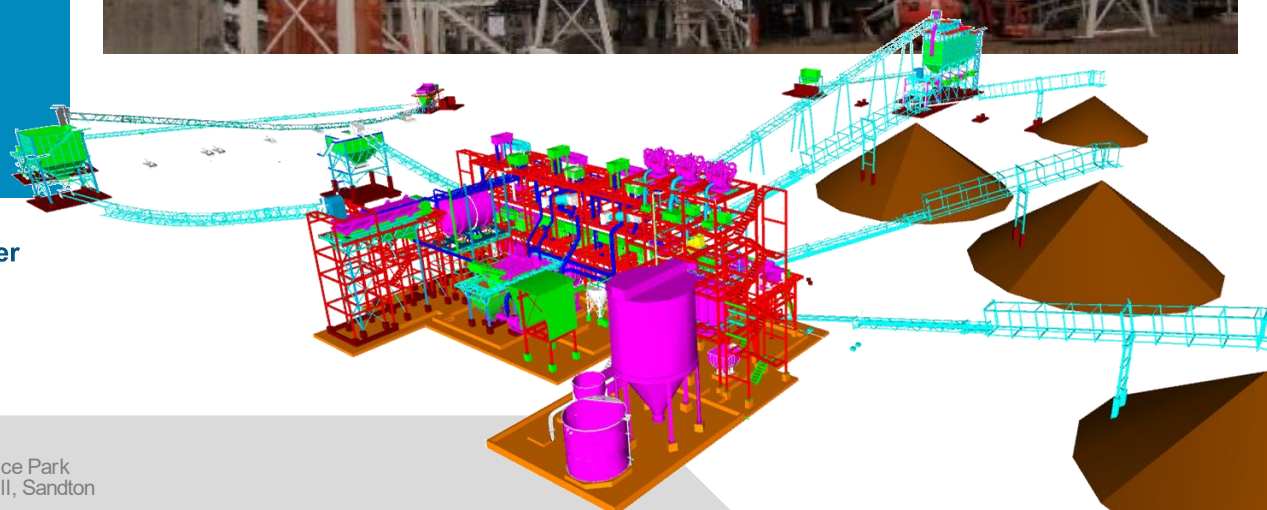
- Engineering & Design
 - Process
 - Mechanical
 - Civil & Structural
 - Electrical
 - Control & Instrumentation
- Project Management
- Procurement
- Construction Management
- QA/QC
- Logistics
- Site Management
- Commissioning

PERIOD

January 2010 – June 2011

Originally positioned as the second largest metallurgical anthracite producer in South Africa, the commissioning of a second coal processing plant near Richards Bay in KwaZulu-Natal shifted Somkhele to becoming the largest South African producer at the time. Prior to this 2010 project, Tendele had an existing coal washing plant on the site, Somkhele 1. A new plant was required to double the production capacity.

LogiProc was appointed by the client's project managers as the EPCM contractor for this project. A complete re-design was required to address issues experienced on the first plant and there are substantial differences between the two production units. The plant consists of a primary, secondary, and tertiary crushing circuit, followed by a dense medium (DM) separation drum, primary and secondary DM cycloning and screening circuit. Fine coal is recovered by spirals, and a thickener is used to recover the water with the underflow being pumped to the tailings storage facility.



Contact Number

+27 (0)11 465 2216



Web Address

www.logiproc.co.za



LogiProc HQ

Block E, Lonehill Office Park
3 Lone Close, Lonehill, Sandton