

Anglo Platinum

Mogalakwena Mobile Crushing & Screening Plant

PROJECT DESCRIPTION

Design and Construction of a mobile crushing and screening facility.

PLANT CAPACITY

350 tph

LOCATION

South Africa

CONTRACT TYPE

EPC/Turnkey

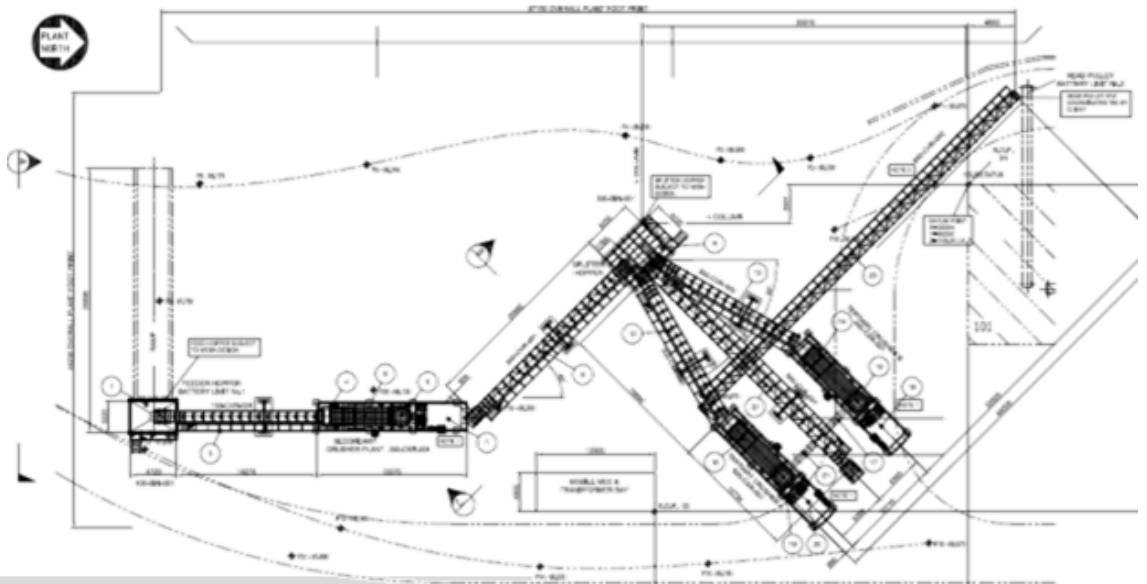
SCOPE

- Engineering & Design
 - Process
 - Mechanical
 - Civil & Structural
 - Electrical
 - Control & Instrumentation
- Project Management
- Procurement Support
- Construction Management Support
- Commissioning

PERIOD

2009 - 2010

LogiProc was contracted by FLSmidth to design and construct a Mobile Crushing Plant and screening plant for Anglo Platinum's Mogalakwena Mine in the Limpopo province of South Africa. The purpose of the plant is to crush the primary crushed mined ore (-180mm) to the required size of +0mm to -8mm. The plant consisted of feed bin; a primary and secondary crushing circuit; conveyors; and screens, all designed and manufactured to be mobile.



Contact Number

+27 (0)11 465 2216



Web Address

www.logiprocc.co.za



LogiProc HQ

Block E, Lonehill Office Park
3 Lone Close, Lonehill, Sandton